

Operating Handbook for Programming Software

BIRDY WP-r2 & WP-128

TPLpages v3.03.7

Version 1.3.0





Document history

Edition	Date	Description	Parts revised
V1.0.1	13/04/2015	Connection sketches	
V1.0.3	21/07/2015/	TPLpagers software update	all
v1.1.0	18/11/2015	Document editing, Merge of BIRDY WP-r2 and WP-128 and Update based on programming software v3.03.1	all
V1.2.0	11/04/2016	Update on programming version software v3.03.2	§6.2.6
V1.3.0	28/10/2016	Update on TPLpagers v3.03.7	§3(first install) §4.1(options) §6.1 ⁶ §6.2.2 ² §6.2.3(new) §7(logo change)
<p>Version naming convention : Vx.y.z z is incremented for a minor change like a syntax error, adding a detail, a change in format, and are draft versions before official version y is incremented for official released versions x is incremented for a major change like adding a chapter, a new function</p>			

Copyright

This document is TPL Systèmes property.
Its use, disclosure or publication are forbidden without written authorization

NOTE

TPL Systèmes reserves the right to modify this manual and its contents without any previous notice. Although no effort has been spared to make this manual as accurate as possible, it is not a contractual document.

TPL Systèmes

ZAE du Périgord Noir
24200 SARLAT - France
Tél : +33 5 53 31 55 00
E-mail : support@tplsystemes.com
<http://www.tplsystemes.com>



Table of Contents

1	Abbreviations	4
2	General overview.....	5
2.1	How to plug.....	5
2.2	Minimum required computer configuration.....	5
3	Software setup	6
4	Software overview.....	8
4.1	Scrolling menus	9
4.2	Menu buttons.....	13
5	Read / Program a BIRDY.....	14
5.1	Read a BIRDY programming	14
5.2	Program a BIRDY	14
5.3	Open / Save a programming file.....	15
6	Programming parameters.....	15
6.1	Identities parameters	15
6.2	Configuration parameters.....	19
6.2.1	<i>General settings</i>	<i>19</i>
6.2.2	<i>Menus</i>	<i>23</i>
6.2.3	<i>Signaling mode on charger</i>	<i>24</i>
6.2.4	<i>Serial transmission of received messages</i>	<i>25</i>
6.2.5	<i>Rings.....</i>	<i>27</i>
6.2.6	<i>System monitoring.....</i>	<i>29</i>
6.2.7	<i>Out of range notification.....</i>	<i>30</i>
6.3	Display	31
6.4	Clock.....	33
6.5	User profiles	34
6.6	Pre-defined messages	35
6.7	Text-filters.....	36
7	BIRDY firmware update.....	37
8	Cradle relay output.....	39



1 Abbreviations

AC	Alternative Current
AM / PM	Ante meridiem / Post meridiem
BIRDY	Name of TPL Systèmes pager
BIRDY WP-r2	BIRDY WaterProof, revision 2, with frequency synthesis
BIRDY WP-128	BIRDY WaterProof, with synthesized frequency, revision 2, with 128 addresses
LCD	Liquid Crystal Display
LED	Light Emitting Diode
PC	Personal Computer
POCSAG	Post Office Code Standardization Advisory Group, data transmission asynchronous protocol (used for pagers)
RIC	Radio Identity Code
UART	Universal Asynchronous Receiver Transmitter
USB	Universal Serial Bus
UTC	Coordinated Universal Time



Although programming software is the same for all models of BIRDY pagers, this handbook applies to **BIRDY WP-r2** and **BIRDY WP-128** pager more specifically. Some parameters may or may not exist or be missing in other **BIRDY** models.

Unless stated, instructions given in this manual apply to both BIRDY WP-r2 and BIRDY WP-128.

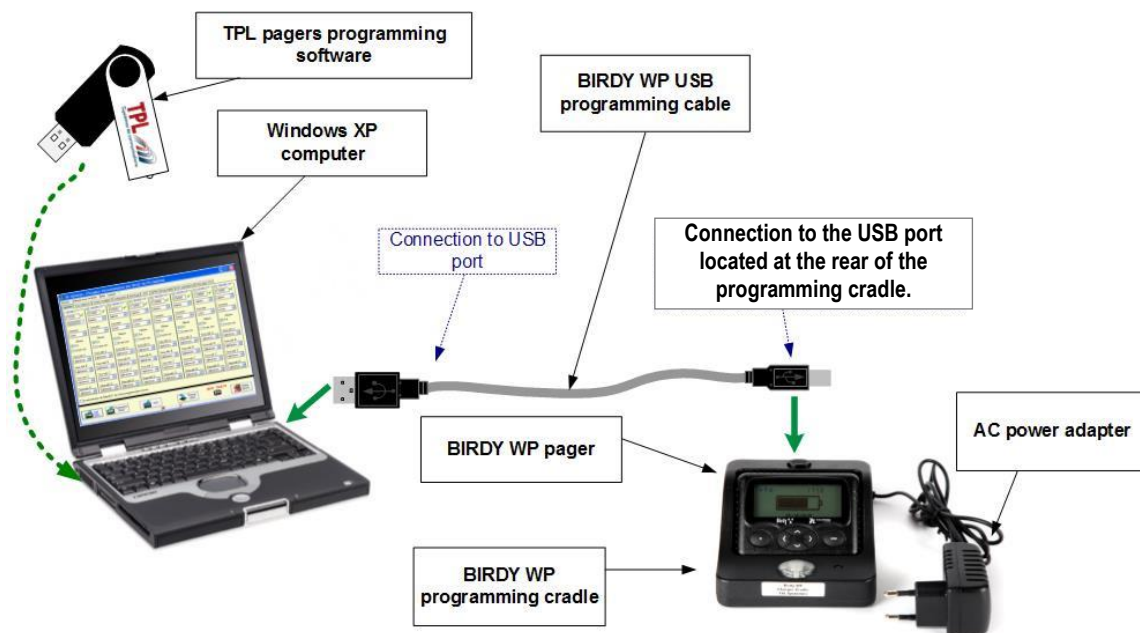
2 General overview

This document explains how to use the **BIRDY** pagers programming software.

In order to program a **BIRDY** (POCSAG) pager, it is necessary to be equipped with :

- the **BIRDY** programming cradle
- the power adapter for cradle
- an USB-USB cable
- the **TPL Systèmes** programming software for pagers (named **TPLpagers**)

2.1 How to plug



2.2 Minimum required computer configuration

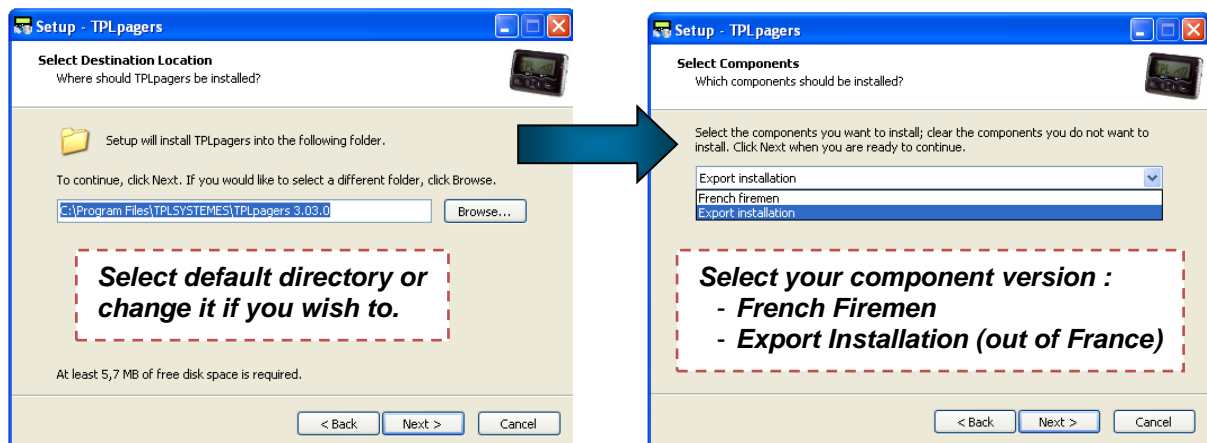
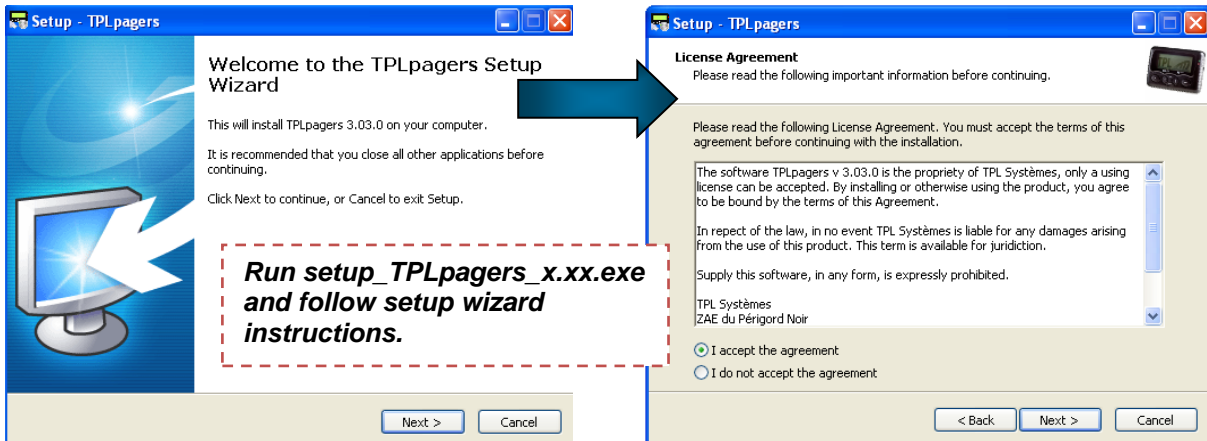
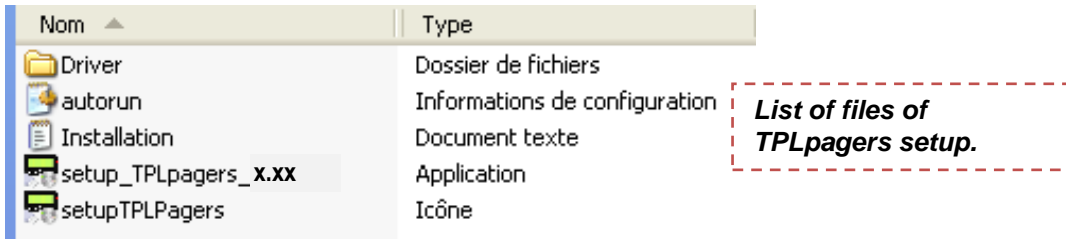
The computer has to be equipped with a Windows (XP, Seven, 8, 8.1, 10, 32 or 64 bits) operating system as well as an USB port.

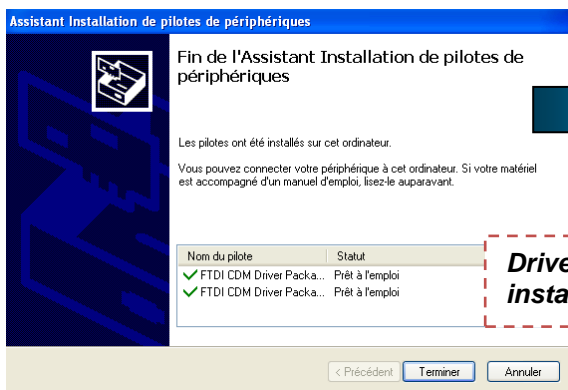
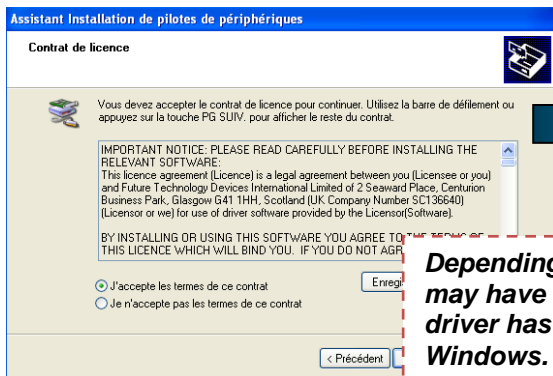
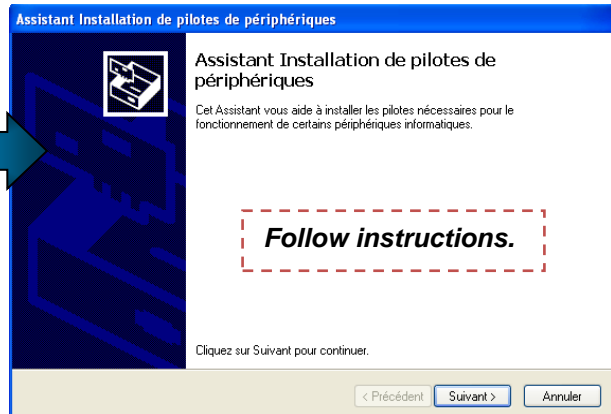
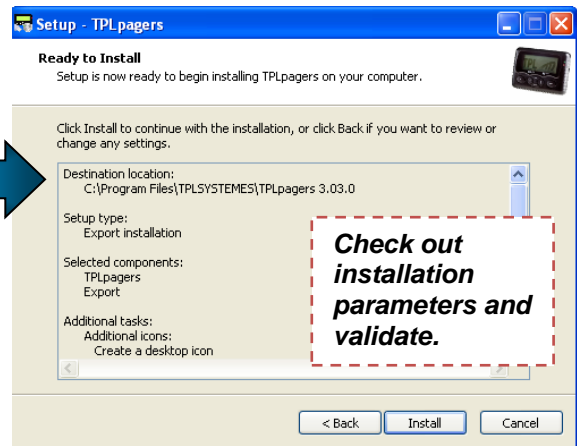
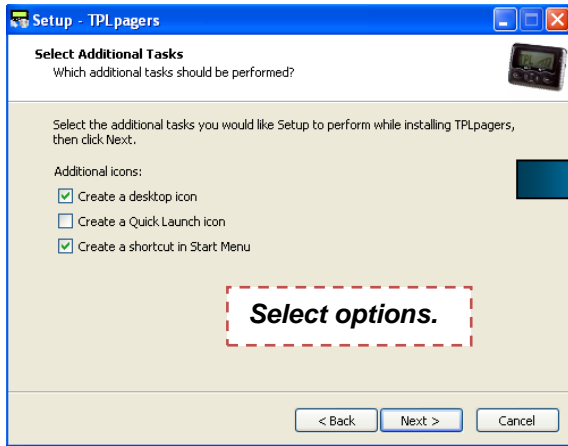


3 Software setup

In order to install BIRDY programming software, please insert the CD-ROM or USB key provided with the equipment and run the file “**setup_TPLpagers_x.xx.exe**”.

Do not plug the cradle to the computer at first install.







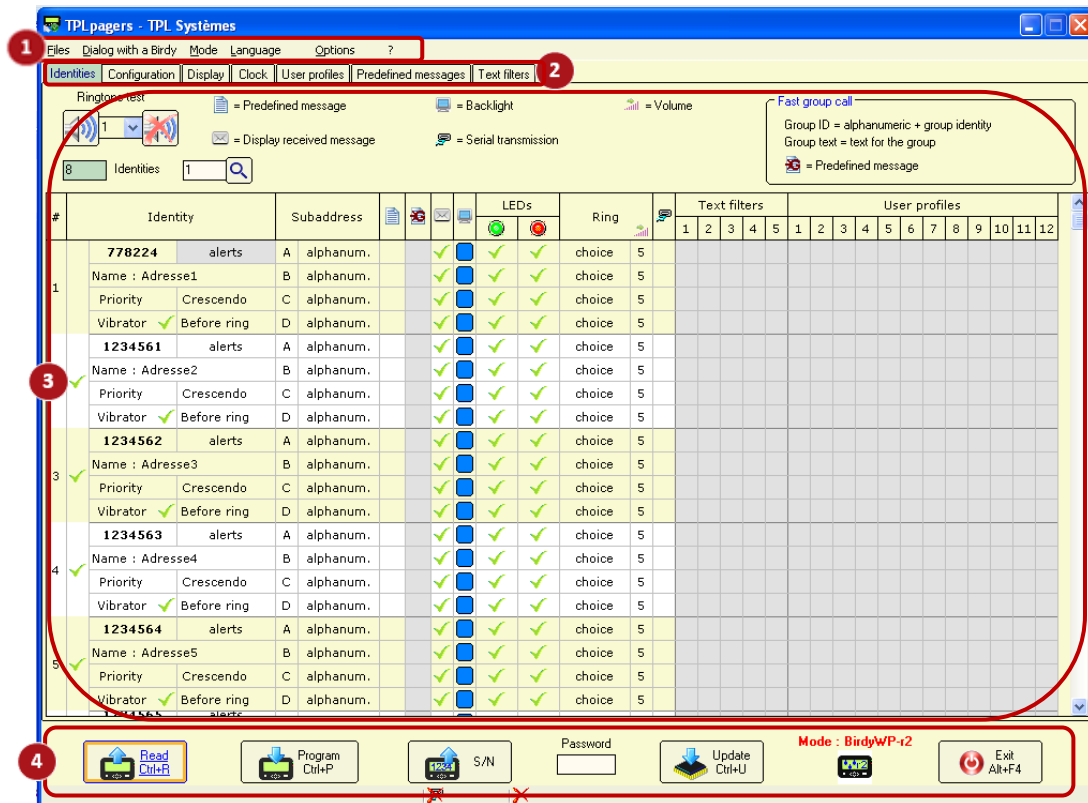
Plug the BIRDY to the programming cradle and power the programming cradle. Link it to your computer (see **paragraph 2.1**) : in case of first install, drivers setup continues and completes.

You may now launch **TPLpagers**.

4 Software overview

TPLpagers software can be launched by a double click on icon 

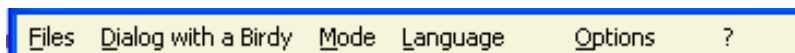
Home window appears.



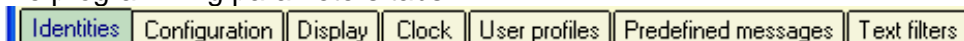
TPLpagers home window

It is divided in 4 zones :

- **1** The scrolling menu bar (top)

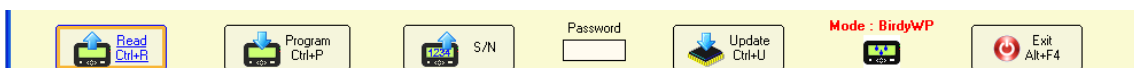


- **2** The programming parameters tabs



- **3** The window itself related to the current tab, with various parameters

- **4** The tool bar





4.1 Scrolling menus

Scrolling menus offer different functions :

“Files” menu

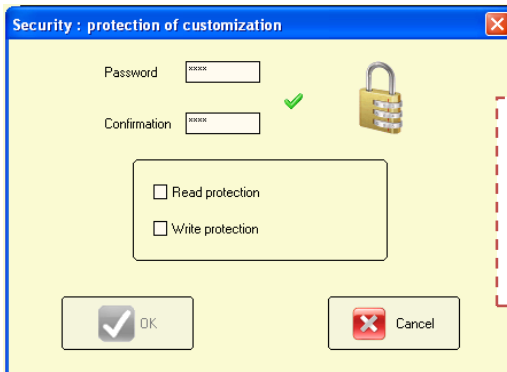
Files				
	Open	Ctrl+O	Open an existing programming file	CTRL+O
	Save		Save opened file under same name	
	Save as ...	Ctrl+S	Save current programming file under a new file name	CTRL+S
	Print		Create a text file with all programming parameters	
	Set as default customization		Define current parameters as default configuration	
	Compare 2 customizations		Compare parameters between 2 configurations	
	Exit	Alt+F4	Exit and close software	ALT+F4

“Dialog with a Birdy” menu

Dialog with a Birdy				
	Read	Ctrl+R	Read a BIRDY configuration	CTRL+L
	Program	Ctrl+P	Write the current configuration into a BIRDY	CTRL+P
	Update the software with a new file	Ctrl+U	Update BIRDY software with a new file	CTRL+F
	Update the software		Update BIRDY software with a selected file	
	Read the serial number		Read BIRDY serial number	
	Read the history of received messages		Read the last 40 received messages	
	Read the history of events		Read the last 400 received events	
	Protection of customization		Protect current configuration with password (see below)	
	Communication port		Select communication port	

Password protection :

This option needs to be activated in *Options | Various options* menu (see below) to be visible.



**Enter a password (4 characters).
Select whether you wish protection to be active when you :**

- **Read a programming**
- **Write a programming**
- **Or both**

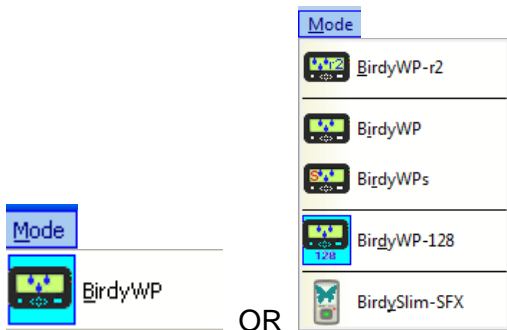
To set on a password :

- Go to menu *Dialog with a Birdy | Protection of customization*
- Enter your password
- Select your option (Read or Write)
- Click on OK
 - o Change is written to BIRDY memory and you get an information message
- You must then enter password in bottom tool bar to read or write BIRDY programming

To set off a password

- Enter password in bottom tool bar
- Go to menu *Dialog with a Birdy | Protection of customization*
- Erase your former password and leave blank fields
- Click on OK
 - o Change is written to BIRDY memory and you get an information message
- Password protection has been removed

“Mode” menu



Displays possible BIRDY modes of your programming software, so you may change easily.
Current mode is over blue background.
Refer to menu Options below for more details.
Thanks to check you are in right mode : BIRDY WP-r2 or BIRDY WP-128

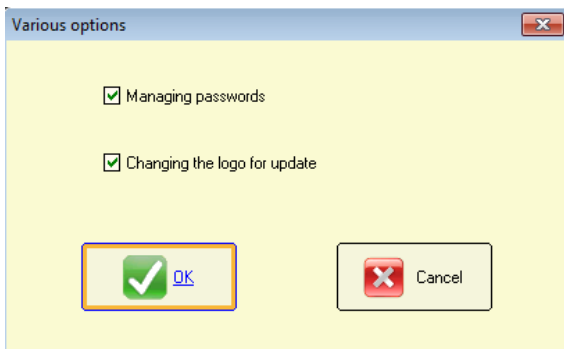


“Language” menu

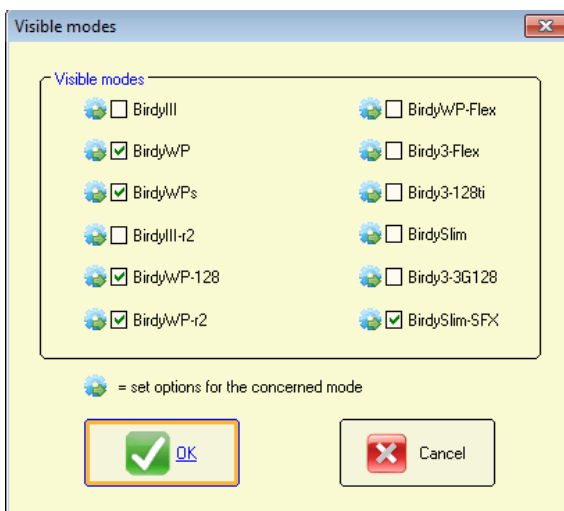
Language	
Français	Switch software language to French
English	Switch software language to English, current language is in gray
Deutsch	Switch software language to German
Deutsch (Deutschschweiz)	Switch software language to German (for Switzerland)
Dutch	Switch software language to Dutch
Nederlands (België)	Switch software language to Flemish

“Options” menu

Options	
Various options	Open window to select options (see below)
Visible modes	Open window to select visible BIRDY modes (see below)



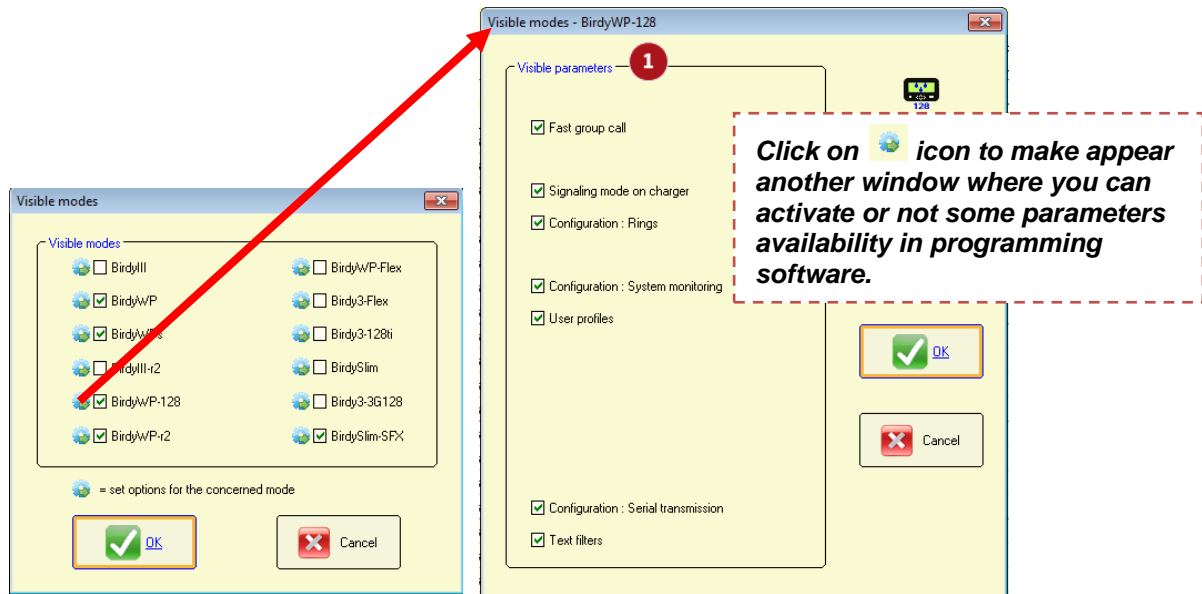
Click on “Various options” to make appear a window to select if you wish to use a password protection for your customization, or to be able to change the logo when BIRDY starts (see paragraph 7)



Click on “Visible modes” to make appear a window to select BIRDY modes. Check the BIRDY modes you are likely to use. Then in Mode menu, select the BIRDY mode corresponding to your current use (see above)



Options in BIRDY modes



1 Visible parameters

Check box to make parameter available in the programming software.
If corresponding box is not checked, parameter will not be visible or not available.

Fast group call

This feature is dedicated to some customer (see **7** and **9** in **paragraph 6.1**).

The transmission is composed with “group ID” addresses, a “Group text” address and the message itself. The message is thus sent to all “group ID” addresses and recognized as a group message.

Message is sent to many pagers without being repeated to each address, thus saving time.

When pager has a “group ID”, it displays a blank message when it is set off by this identity, and very shortly after displays the group message content.

Signaling mode on charger

If checked *Signaling mode on charger* tab is available under *Configuration* tab (see **paragraph 6.2.3**)

Configuration : Rings

If checked, *Rings* tab is available under *Configuration* tab (see **paragraph 6.2.5**)

Configuration : System Monitoring

If checked, *System Monitoring* tab is available under *Configuration* tab (see **paragraph 6.2.6**)

User profiles

If checked, *User Profiles* tab is available (see **paragraph 6.5**)

Configuration : Serial transmission

If checked, *Serial transmission* feature is available in *Identities* tab and *Configuration | Serial transmission of received messages* tab (see **paragraph 6.1 & 6.2.4**)

Text filters

Text filters (see **paragraph 6.7**)



“? / Help” menu

	About ...	Displays information about programming software version
	System information	Displays information about your computer (processor, RAM, OS)

4.2 Menu buttons

ICONS	DESCRIPTION	SHORTCUTS
	Read all programming parameters from the pager. Wait for success window. 	Ctrl + L
	Write all programming parameters to the pager. Wait for success window. 	Ctrl + P
	Read and display the BIRDY serial number. 	
	Enter password here <i>(if password protection has been activated)</i>	
	Update the BIRDY firmware	Ctrl + U
	Information logo : the software is in BIRDY WPs mode (example)	
	Information logo : the software is in BIRDY WP mode (example)	
	Exit the program	Alt + F4
	In programming mode, this button enables to listen to the ringtone associated to the selected RIC or a user-defined tone. BIRDY must be placed on the programming cradle.	

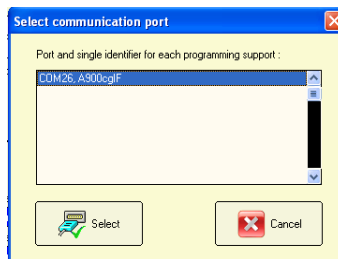



	<p>Stop the ringtone playing in programming mode.</p>	
	<p>Shows that parameter value is not compliant.</p>	

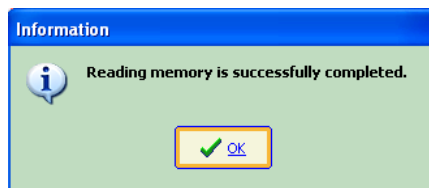
5 Read / Program a BIRDY

5.1 Read a BIRDY programming

- Plug the BIRDY on the cradle as explained in **paragraph 2.1**.
- Launch **TPLpagers** programming software.
- Communication port is detected automatically.
 - o In case of conflict with another active port using same driver, you may need to select communication port.



- Click on  or select menu *Dialog with a Birdy | Read* or type CTRL+R to launch the BIRDY memory reading
 - o BIRDY displays “programming mode”. TPLpagers tabs are shaded in gray.
- Wait for success window




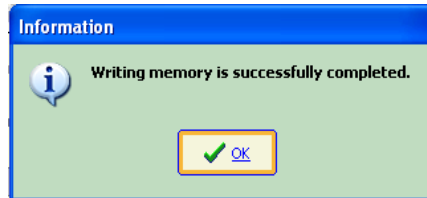
- BIRDY parameters have been loaded into **TPLpagers** software

5.2 Program a BIRDY

- Plug the BIRDY on the cradle as explained in **paragraph 2.1**.
- Launch **TPLpagers** programming software.
- Define all desired parameters in **TPLpagers** software. When parameters are OK :



- Click on  or select menu *Dialog with a Birdy | Program* or type *CTRL+P* to launch the BIRDY memory writing
 - o BIRDY displays “programming mode”. **TPLpagers** tabs are shaded in gray.
- Wait for success window.



- **TPLpagers** parameters have been loaded into BIRDY.
- Eject BIRDY from its programming cradle. BIRDY starts automatically with new parameters.

5.3 Open / Save a programming file

BIRDY programming files are in **.birdyWPr2.rev2** extension (for BIRDY WP-r2 pager) and **.birdyW128.rev2** extension (for BIRDY WP-128 pager).

Select menu *Files | Open* or type *CTRL+O* to open an existing file.

A window pops up enabling you to browse your directories and select a file.

Wait for success window.

Select menu *Files | Save as* or type *CTRL+S* to save current parameters into a file.

A window pops up enabling you to select directory and file name of backup file.

Wait for success window.

6 Programming parameters

6.1 Identities parameters

This window enables to define up to 8 RIC (BIRDY WP-r2), or 128 RIC (BIRDY WP-128) with different profiles (ring tone, vibrator, etc...).



1 Ringtone test

Offers user to listen to ringtone.

Select ringtone number (up to 21 tones) and click on to play ringtone. Click on to stop play back.

2 Icons legend

3 Identities

Shows how many identities are available for the pager. At least one identity must be defined. In BIRDY WP-r2 : 8 addresses maximum are available. Field is shaded. In BIRDY WP-128 : you may create up to 128 addresses for the pager

4 Identity selection

This field enables you to go to a specific address among all of them.

Enter RIC address number and click on to reach it (displayed on first line).

5 Identity addition/deletion

BIRDY WP-128 only : Enables to add or delete an identity.






Click on to add an identity at end of list.

Click on to delete the last identity.

6 Identity

Enables to activate and define identity.



<i>Activation column</i>	Click on identity number to activate identity. Icon  is displayed.
<i>RIC code</i>	Enter RIC code for the address.
<i>Function mode</i>	Select the function mode of the RIC address. Click on field to display drop-down list.
<i>Alerts</i>	Use this address as receiving address of POCSAG alarm messages. The "ALERTS" selection integrates the functions « MESSAGES » and « SERVICES » as native.
<i>Messages</i>	Use this address as receiving address of POCSAG messages other than alarm messages (unimportant information messages). Messages are displayed with a specific ringtone and display. No ACK is available.
<i>Services</i>	Use this address as receiving address for service messages (for instance : remote programming, summer time, etc ..). Message is not displayed. <i>This feature is given to user to offer more flexibility in addresses programming. With this typology of messages an address can be programmed to receive information or services only messages.</i>
<i>Name</i>	Name must be 12 characters max. When you define names, names are displayed as default in <i>Identities</i> BIRDY menu
<i>Priority</i>	This option, when activated on an identity, enables to play the BIRDY ring tone even if it is in silent mode or when the quiet period is activated. Click on field to activate the feature  .
<i>Crescendo</i>	This feature enables to activate the crescendo mode in the ring tone. Click on field to activate the feature  .
<i>Vibrator</i>	Validates vibrator upon receiving the identity code. Click on field to activate the feature  .
<i>Before ring</i>	Validates the vibrator feature before the ringtone upon receiving the identity code. Click on field to activate the feature  .

7 Sub-addresses

Enables to define sub-addresses format and parameters, in case address is used to receive alert messages.

You may define up to 4 sub-addresses per identity with different format and parameters.

Principle is the same for all sub-addresses : A(00), B(01), C(10), and D(11).

Validate the message format which will be received on sub-address by selecting it in dropdown list.

<i>Alphanum</i>	Format of the alphanumeric type message. If selected, field is in transparent.
<i>Numéric</i>	Format of the numeric/digital type message. If selected, field is in red.
<i>Tone only</i>	Format of the message type "tone only" (without attached message). If selected, field is in yellow.
<i>Disabled</i>	Inhibit the sub-address (the pager will no longer receive messages on this sub-address). If selected, field is in gray.
<i>Group ID</i>	Fast group call feature only. If selected field is in dark blue. Enables to define the sub-address in a format able to receive a group message.
<i>Group text</i>	Fast group call feature only. If selected field is in pale blue. This format indicates the message is a message sent to a group of identities.

In order to receive legible messages, select the right option according to your POCSAG transmitter.



The following fields apply to the relevant sub-address of the RIC code.

8 Pre-defined message

This feature enables to display a pre-defined message on BIRDY screen when you set off the sub-address.

Click on the field and select pre-defined message (or leave it blank) from dropdown list. You may create up to 32 messages (BIRDY WP-r2) and 64 messages (BIRDY WP-128). Pre-defined message is selected from its number.

Pre-defined messages are defined in *Predefined Message* tab (see **paragraph 6.6**)

9 Pre-defined message (fast group call)

This feature enables to display a pre-defined message on BIRDY screen when you set off a group ID address.

Sub-address must be defined as a “group ID” format.

The pre-defined message may warn the user that the pager is about to receive a group message, for instance.

Click on the field and select pre-defined message (or leave it blank) from dropdown list. You may create up to 32 messages.

Pre-defined message is selected from its number.

Pre-defined messages are defined in *Predefined Message* tab (see **paragraph 6.6**)

10 Display received message

Enables to display or not the message sent by the transmitter.

Click on field to activate the feature .

11 Screen backlight

Enables to program a particular screen backlight color on the sub-address. Screen gets backlit in the selected colour upon receipt of a message.

Click on field to select backlight colour from dropdown list.

Possible colours are : none, blue, red, green, white, cyan, pink, orange

12 LEDs

Enables to choose the color of lights that is displayed when receiving an alert.

Possible colors are : red / green / red-green / no color

13 Rings

Selects a specific ring tone for this sub-address.

Silence Pager does not ring upon receipt of a message on the sub-address.

Choice User has the ability to select the ringtone from the BIRDY menu.

1 to 21 Selects a tone among one of the 21 user-defined tones (see *Configuration | Rings* tab to define tones)

Volume Select ringtone volume from 1 to 5

14 Serial transmission

This feature enables to transmit the received message to the USB port of the charging cradle, when receiving it on the sub-address. It enables to monitor messages panels.

Click on field to activate the feature .



15 Text filters

This feature enables to filter specific text in the message received on the sub-address. It enables to alter alert behaviour if text can be found in received message.

*Text filters are defined in the Text filters tab (see **paragraph 6.7**).*

You may define up to 5 filters.

Click on field to activate the filter corresponding to its number ✓

16 User profiles

Enables to apply a user-defined profile to the sub-address.

*User profiles are defined in the User profiles tab (see **paragraph 6.5**). You may create up to 12 profiles.*

Click on field to activate the profile corresponding to its number ✓

6.2 Configuration parameters

6.2.1 General settings

This window enables to program the different parameters related to your alert network.

1 Alert duration

Selects the duration (in seconds) of the ring tone when receiving a programmed identity code

Ring tone duration can range from 1 to 99 seconds.

Uninterrupted If checked, the pager will ring permanently upon receipt of a message.

This duration is then assigned to each address.



2 Crescendo duration

Selects the crescendo duration (in seconds) upon receipt of a programmed RIC code.

Duration of crescendo ring tone can range from 1 to 99s.

This duration applies to RIC addresses for which the crescendo is active. The crescendo feature enables to have a ring tone starting at a low level and going progressively to a louder level.

3 Vibrator duration before ring

Selects the duration of the vibrator before the ring tone when receiving a programmed identity code.

Vibrator duration can range from 1 to 59 seconds

This duration has to be lower than the alert duration from more than 1 second. The validation of this feature can be made in the "Identities" tab for each identity.

4 Reminder unread message

Enables to have a sound (2 beeps) to indicate the receipt of an unread message

Display message When the reminder of unread message has been validated, this enables to display the message previously received on each reminder but also to play the ringtone as if it were a new message. Message header line is in reverse video.
Check the box to activate the feature

Periodicity *Inactive* : no reminder sound in case of unread message
active / 15s : BIRDY pager will beep twice every 15s
active / 30s : BIRDY pager will beep twice every 30s
active / 1min : BIRDY pager will beep twice every minute
active / 2min : BIRDY pager will beep twice every 2 minutes

Number Selects the number of reminder for unread messages.
10 to 250 : selection of number by steps of 10.
uninterrupted : reminder beep will stop after all messages have been read

Permanent light signal When receiving an unread message, enables to have the red LED blinking and a light blinking on the display.
Check the box to activate the feature

Once all messages have been read, BIRDY pager stops beeping.

5 Duplicates messages

Prevents BIRDY pager from ringing several times when receiving the same message (for instance, when the alert network uses POCSAG repeaters)

Inhibition *Inactive* : The pager rings each time it receives a message
Active / 1min : The pager will not take into account the repeated messages, 1mn after receiving the first one.
Active / 2min : The pager will not take into account the repeated messages, 2mn after receiving the first one.
etc ... up to 6 min

With identity management If checked, duplicated message can be received on different pager addresses. If message is sent to same address, it is not received
If not checked, duplicated message cannot be received twice whatever the reception address.

= new message Indicates the saving method of repeated messages (with same text).
If checked, repeated message will be saved as a new message, within the memory.
If not checked, repeated message will be saved by overwriting the previous message



Authorized errors Enables to authorize or not character errors in the message in order to have it considered as a repeated message.
0 error : a repeated message is a message exactly same as previous one (errors included).
4 / 8 / 12 / 16 / 20 errors : enables to authorize a message as repeated even if it contains some errors compared to the previous message. This errors number is set from 4 to 20 errors.

6 Use LED of the support

Validates the use of the flashing LED on the charging cradle. This flashing LED blinks when BIRDY receives a message while being in charge.

Check the box to activate this feature.

With user menu Validates the use of the charger flashing LED through the BIRDY menu. If checked, feature is available in BIRDY menu.

7 Keyboard locking

Validates feature to lock and unlock the keyboard.

If checked, keyboard locks after delay to return to stand-by mode (if it has been activated).

See **5** in **paragraph 6.3**. User unlocks keyboard by a press on  and a validation.

With user menu Validates the possibility to have a menu to lock / unlock the keyboard. If checked, feature is available in BIRDY menu. If not checked, feature is not available in menu.

8 Miscellaneous

Last 10 messages not erasable If checked, prevents erase of last 10 received messages

Unread messages erasable If checked, unread messages can be erased.

Message considered read with first keyboard action If checked, the first key press on keyboard removes the message from unread messages list

Signalling the presence of the pager on the support If checked, activates charging cradle output relay when pager is set on cradle (see **paragraph 8**)

Invisible identities by user If checked, user has the ability to make RIC codes list programmed on the pager, invisible.

Keyboard sound If checked, each press on a key plays a tone. If not checked, key press remains soundless.

9 Low battery alert

Validates a sound indication when battery level reaches a low level and battery needs to be charged.

Rechargeable battery If checked, a rechargeable battery can be used in the pager without affecting the validity of the battery level information. If not checked, and a rechargeable battery is used in the pager, the battery level information displayed may not be the accurate one (due to voltage differences between rechargeable and alkaline batteries).

Periodicity *1min / 75min* : Time-lag for the repetition of the low battery warning.
Disabled : no warning sound is played

Time period of validation Enables to define a time range in the day when low battery warning is active. This enables to prevent the warning during the night (for instance).



10 Quiet period

Enables to set a quiet period during which the pager will play no sound on a message receipt.
Ring inhibition If checked, enables to program a time range in the day when quiet period is active.

11 POCSAG

Reverse polarity If checked, reverse polarity of the POCSAG frames is used in your alert network.

Speed Defines POCSAG frames dialog speed
Possible values are : 512, 1200, 2400 bauds

Radio frequency Enter POCSAG carrier frequency (in MHz).
Frequency must be a multiple of 2.5KHz (frequency channel step).
Frequency can range from 80MHz to 999MHz.

Rejection of errors Enables to manage the receipt of messages likely to contain characters in error
Disabled : all messages are received
1 to 20 errors, or 25%-33%-50% of errors : when error detection reach defined number or percentage of errors, message is rejected.

View the errors If checked, characters likely to be erroneous are displayed in reverse video on a received alert.

No empty message If checked, empty messages (with no character at all) are not taken into account as alert message.

12 Use relay of the support

Validates the use of dry contact relay present on the charger cradle (Refer to **paragraph 8**)
Check the box to active the feature

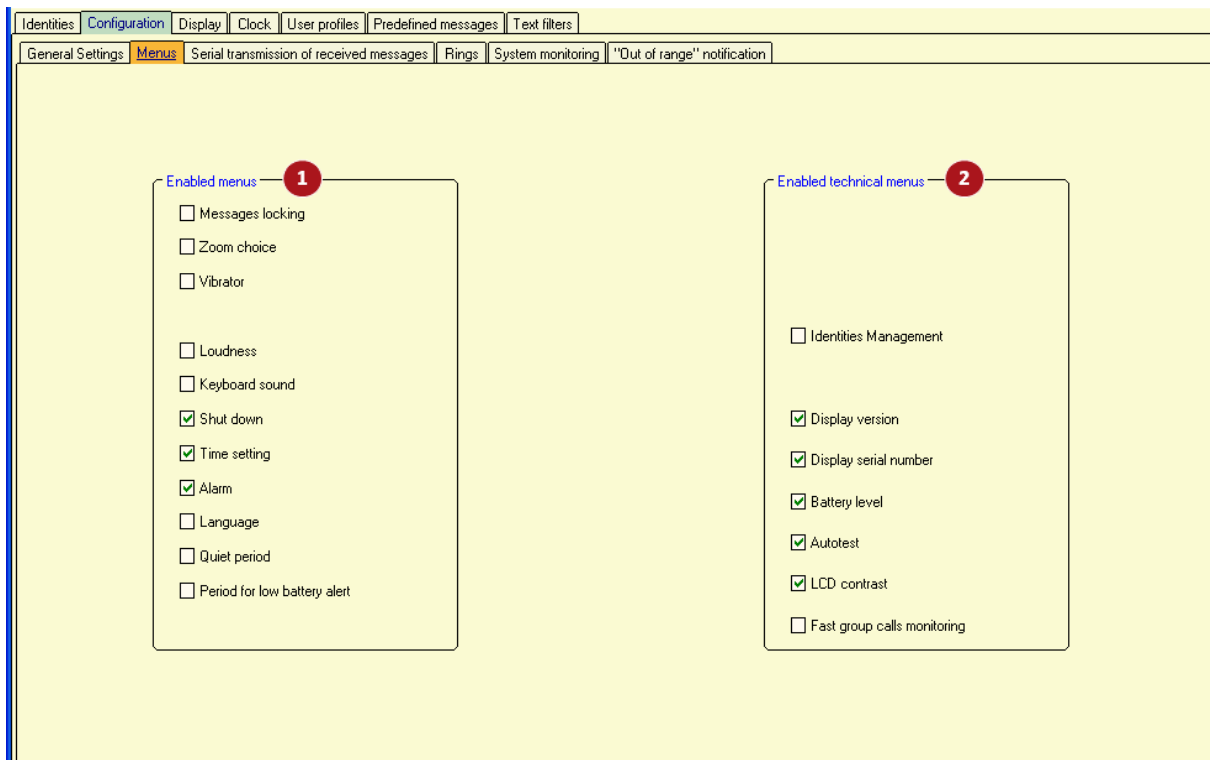
Closures number Number of closings of the contact relay upon receipt of one of the programmed RICs
Number can range from 1 to 255.

Closing time Closing time of relay in seconds.
Time can range from 1 to 255s.

Opening time Opening time of relay in seconds.
Time can range from 1 to 255s.



6.2.2 Menu



This window enables to select which features will be available for user in BIRDY menu.

1 Enabled menus

<i>Messages locking</i>	If checked, offers menu to save one or several messages in order not to delete them through function "delete all"
<i>Zoom choice</i>	If checked, offers menu to choose the size of characters in a message
<i>Vibrator</i>	If checked, offers menu "Vibrate" enabling to select the ring mode : <ul style="list-style-type: none"> - programmed ring - ring + vibrator - vibrator only
<i>Loudness</i>	If checked, offers feature to change ring volume
<i>Keyboard sound</i>	If checked, offers feature to activate keyboard sound
<i>Shut down</i>	If checked, offers menu to switch off the pager. If menu is not present, pager can only be switched off by removing battery.
<i>Time setting</i>	If checked, offers menu enabling to change time on the pager.
<i>Alarm</i>	If checked, offers menu enabling to program an alarm clock.
<i>Language</i>	If checked, offers menu enabling to modify the pager language.
<i>Quiet period</i>	If checked, offers menu enabling to program a time period during which the BIRDY pager will not emit any sound upon receipt of a message. BIRDY pager will save the received message(s) but no sound indication will be sent during the programmed time period.
<i>Period for low battery alert</i>	If checked, offers menu enabling to define the time period during which the pager will not take into account the low battery warning.



2 Enabled technical menus

Selects the sub-menus which will be present in the technical menu.

<i>Identities management</i>	If checked, offers the Identities Menu in BIRDY. It enables to change RIC and disable an address. <i>Option is not available if "Invisible identities by user" has been checked in 8 of paragraph 6.2.1.</i>
<i>Display version</i>	If checked, offers to know which software version is currently used.
<i>Display serial number</i>	If checked, offers to check the pager serial number.
<i>Battery level</i>	If checked, offers to check the battery voltage.
<i>Autotest</i>	If checked, offers to test the LCD display, the keyboard, the buzzer, the vibrator...
<i>LCD contrast</i>	If checked, offers user to select a convenient contrast level.
<i>Fast group call monitoring</i>	If checked, enables to display all received group calls (even those which do not concern the address). Display can be customized (backlight colour, ringtone, ..)

6.2.3 Signaling mode on charger

This tab enables to define BIRDY behaviour on a message receipt when it is placed on charging cradle.

The screenshot shows the 'Signaling mode on charger' configuration screen. The screen is divided into several sections:

- Receiving a message** (indicated by a red circle 1): Contains a checked checkbox for 'Backlight' with radio buttons for 'Yes' (selected) and 'No'.
- Ring** (indicated by a red circle 2): Contains a checked checkbox for 'Ring' and a dropdown menu set to 'silence'.
- Volume** (indicated by a red circle 3): Contains an unchecked checkbox for 'Volume' and a dropdown menu set to '5'.
- Vibrator** (indicated by a red circle 4): Contains an unchecked checkbox for 'Vibrator' and radio buttons for 'Yes' (selected) and 'Before ring'.
- LEDs** (indicated by a red circle 5): Contains a checked checkbox for 'LEDs' and two checked checkboxes for 'Green' and 'Red'.
- Decoding disabled** (indicated by a red circle 6): Contains an unchecked checkbox for 'Decoding disabled'.

1 to 5 : If box is not checked, BIRDY behaviour is as defined in *Identities* tab. If box is checked, BIRDY behavior is as defined below.



1 Backlight

Enables to activate BIRDY screen backlight on a message receipt.

yes Backlight is turned on.

no Backlight remains turned off.

2 Ring

Enables to program a specific ringtone when BIRDY is on charger and receives a message.

Silence BIRDY does not ring on a message receipt.

Choice Menu is available to user to choose their ringtone.

1 to 21 Selects a tone among one of the 21 user-defined tones (see **paragraph** Erreur ! Source du renvoi introuvable. to create ringtones).

3 Volume

Enables to select ringtone audio volume from 1 to 5.

4 Vibrator

Enables to validate whether vibrator is active or not in this mode

Yes If checked, vibrator is active

Before ring If checked vibrator is active before ring

5 LEDs

Enables to turn on BIRDY LEDs on a message receipt.

Green If checked, green LED is active.

Red If checked, red LED is active

If two LEDs are checked, both are active.

6 Decoding disabled

If checked, BIRDY pager does not decode any POCSAG message when it is on charger. BIRDY cannot receive any message.

6.2.4 Serial transmission of received messages

This window is available only if you checked it in BIRDY menu *Options* (see **paragraph 4.1**).

This tab enables to configure the serial output and the text format.

Serial interface can be used from charging cradle USB connector and a USB-serial converter.



1 Minimum size of messages

This corresponds to the minimum number of characters that need to be sent in order to have the message re-transmitted by the serial interface
Size ranges from 1 to 255. If 0 is set, all sizes are possible.

2 UART settings

These parameters have to be consistent with those of the application to which the transmission will be made. It is mandatory to have the same values in both applications.

- Speed 9600 or 19200 bauds
- Datas 8 bits or 7 bits
- Stop bits 1 or 2
- Parity No parity, even, or odd

3 Content of the transmission

Enables to format the message that will be re-transmitted.

Example :

```
<11:25 15.11.12 - 01A [ HELLO ] >\x0D\x0A
```

- Start / End of transmission** Characters at the beginning and /or at the end of the transmission in order to mark out the beginning and/or the end of transmission.
- Start / End of messages** One character at the beginning and/or end of the message in order to mark out the beginning and/or the end of the message.
- After "time/date"** Characters inserted after date in re-transmitted message. If "time/date" field is "without", no character is added.
- Time / Date** Defines the position and the display of time and date in the transmission
Without : No display of the date and time in the transmission content.
Start : Date and time will be displayed at the beginning of the



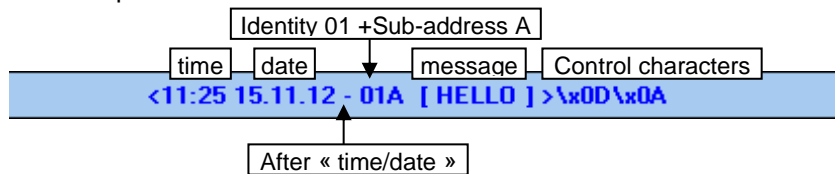
transmission
End : Date and time will be displayed at the end of the transmission.

Identity & sub-address
 Defines the position and the display of the transmission sub-address.
Without : No indication of the sub-address in the transmission content.
Start : Identity + sub-address is displayed at the beginning of the message.
End : Identity + sub-address is displayed at the end of the message
 +CR+LF : enables the cursor to insert a line break after each sentence.

Control character
 If needed, enables to insert ASCII characters in the transmission content.

SOH	STX	ENQ	ACK	HT	VT	CR	ESC
ETX	EOT	BEL	OS	LF	FF	NAK	

For instance, in the above example :



6.2.5 Rings

1 Tone N°xx tab

Each one of the 21 possible tones is defined via a tab.
 The specific tone played on receipt of a message is named “message” and has a dedicated tab.



2 Default ring

If checked

Default ring is used for the tone under definition.

If not checked

User has the ability to define a specific tone (see hereafter).

The screenshot shows the 'Rings' configuration screen. On the left, there is a grid of 21 ring tone slots, numbered 1 to 21. Each slot contains an icon: a blue musical note for 'modified', a yellow bell for 'default', or a red error icon for 'error'. A red circle labeled '1' highlights the 'modified' icon in slot 1. Below the grid is a 'Key' legend with icons for 'error', 'default', and 'modified'. The main part of the screen is a configuration table for notes 1-15, 16-30, and 31-45. Each note entry has dropdown menus for 'Note', 'Octave', and 'Duration(x10ms)', and a green checkmark. A red circle labeled '2' highlights the 'Default ring' checkbox and the 'modified' icon in the table header.

1 Ring definition

User can define up to 45 different notes with their respective height and length to compose the ring.

Note Possible values are : C, C#, D, D#, E, F, F#, G, G#, A, A#, B, interval, end

Octave Enables to separate 2 sounds of which fundamental frequency of one of them is the double of the frequency of the other one.

Octaves range from 0 to 7.

Duration Time during which a sound has to be maintained.

Value can range from 1 to 255 (x10ms), ie from 10ms to 2.55s

2 Key legend



This icon is displayed on a ring tone number when the programming of this one contains errors.



This icon indicates that a standard ring tone has been set to the corresponding number.



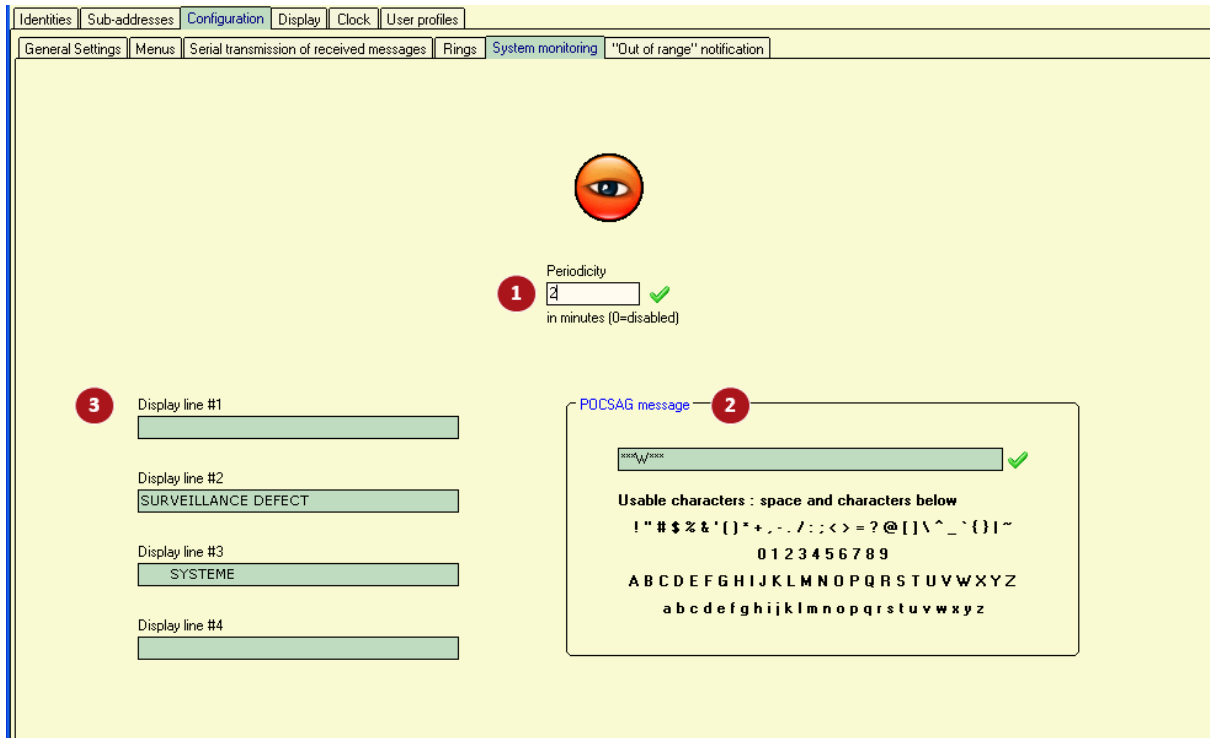
This icon indicates that the ring tone has been modified by user on the corresponding number.



6.2.6 System monitoring

This function enables to send to the BIRDY a specific message on whatever RIC or sub-address.

If the message has not been received by the pager at the end of the programmed duration, the BIRDY will display a pre-defined 4-line message on its screen.



1 Periodicity

Enables to define the period at which POCSAG message is sent by emitter.
*Periodicity can range from 2 to 255min.
0min means function is disabled.*

2 POCSAG message

Enter POCSAG message sent by emitter and expected by pager.
You may enter your own message with available characters.

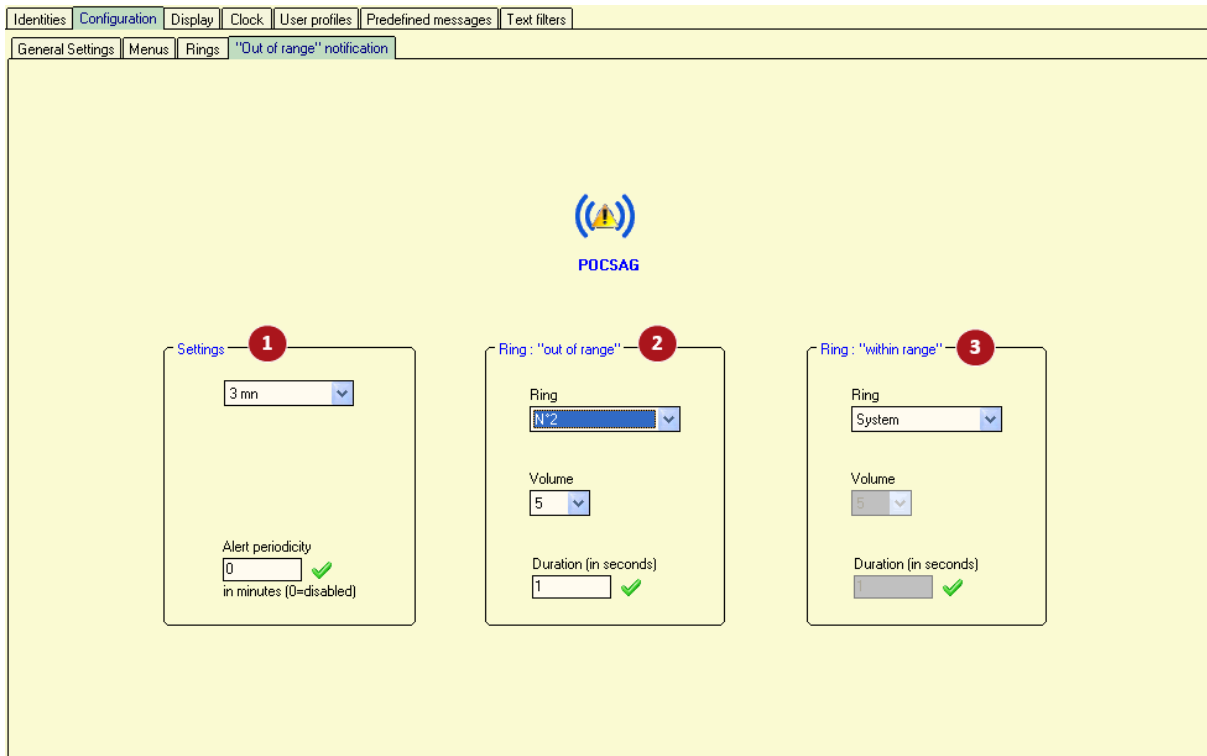
3 4-lines pre-defined message

Enter 4-line message which BIRDY pager will display in case it does not receive the POCSAG message in **2** after periodicity time defined in **1**



6.2.7 Out of range notification

This feature enables to know if the pager is within the radio coverage area or not.



1 Settings

Select time period to check POCSAG signals.

Period can vary from 1 to 9min.

Disabled means function is not active.

Alert periodicity Select alert periodicity in case loss of POCSAG carrier is detected. Periodicity can range from 1min to 99min. A “zero” value means alert is signalled only once.

2 Ring “out of range”

Enables to select a specific ring in case of loss of radio coverage.

Ring Can be *System*, or one of the 21 user-defined tones.

Volume Select ring volume from 1 to 5, in case of user-defined tone

Duration Select ring duration (in seconds), from 1 to 55s, in case of user-defined tone

3 Ring “within range”

Enables to select a specific ring when BIRDY is under radio coverage again.

Ring Can be *System*, or one of the 21 user-defined tones.

Volume Select ring volume from 1 to 5, in case of user-defined tone

Duration Select ring duration (in seconds), from 1 to 55s, in case of user-defined tone



6.3 Display

1 Start text

Enables to program a text which will be displayed when the BIRDY pager is switched on.
Text can be up to 2 lines of 20 characters each.

2 User name

Enables to program a text which will be present on the main screen of the BIRDY.
Text can be up to 20 characters.

3 Messages

Enables to receive a message with or without truncation at the end of the sentence.
No hyphenation If checked, all the words are entirely written without any truncation

4 Date/time format

Selects date display type.

<i>DD-MM</i>	Displays the day first and then the month (DD-MM)
<i>MM-DD</i>	Displays the month first and then the day (MM-DD)
<i>12-hour clock</i>	If checked, displays time on 12h in AM/PM If not checked, displays time on 24h

5 Standby display

Energy saving mode If checked, pager switches to power saving mode 5s after it switched to standby mode.
Only the icons “power-on indicator light”, “POCSAG signal” and “ring active” are displayed.



<i>Clock</i>	If checked, displays date and time in standby mode
<i>Battery level</i>	If checked, displays battery level in standby mode
<i>User name</i>	If checked, displays user name in standby mode. This feature is not possible in case energy saving mode is active.
<i>Last unread message</i>	If checked, displays the latest unread received message, in standby mode. This feature is not possible in case energy saving mode is active.

When in standby, if nothing has been selected, display is same as in energy saving mode (only "power-on", "POCSAG antenna", and "ring" icons are on).

6 Logo

Enables to program a new logo visible at the pager boot-up.

<i>Keep the original logo</i>	If checked, original logo is displayed when pager boots up. If not checked, user can define a new logo. Click on "Change logo" to select image file. Logo must be a bitmap image file, in black and white, in 120 pixels wide and 32 pixels high.
-------------------------------	---

7 Delay return to standby

Defines the time BIRDY takes to switch to standby mode.

Delay can range from 5 to 90s.

If user makes no action on BIRDY within 5s (for example), BIRDY goes to standby mode.

8 Backlight

Enables to select the actions that will turn on the BIRDY screen back-light

<i>Keyboard action</i>	If checked, screen backlight turns on when user presses a key.
<i>Menu</i>	If checked, menu is available to user.
<i>Receiving a message</i>	This feature is shaded here. Refer to <i>Identities</i> tab to define backlight colour on message receipt.

9 Lighting default color

Enables to select default screen backlight colour on pager.

Select colour from dropdown list among : blue, red, green white, cyan, pink, orange.

10 Language

Enables to select the language that will be used into the BIRDY menu.

8 languages are possible : English, French, Spanish, German, Dutch, Danish, Italian, Slovenian, Swedish (through BIRDY menu only)

11 Default zoom

Enables to select the size of characters displayed within a message

Zoom can be x1, x2, or x3. User can modify the zoom if menu has been validated

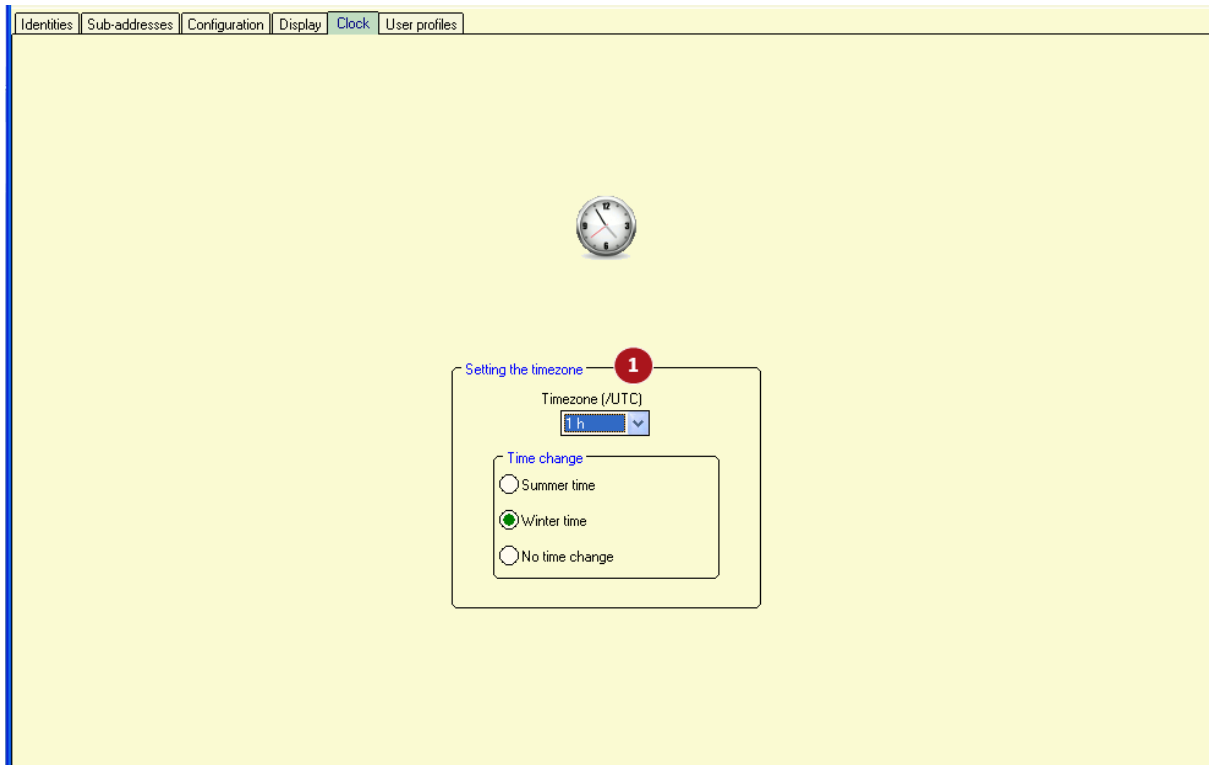
12 LCD contrast

Enables to select the default contrast level on the LCD screen of the BIRDY.

Value range from 1 to 15 : 1 is the lowest level possible of contrast and 15 is the strongest. In order to always have a visible screen, BIRDY updates the contrast according to the temperature and the battery voltage.



6.4 Clock



1 Setting the timezone

Enables to define the parameters of the clock

Time zone (/UTC) Define time zone as an UTC zone

Time change Select a time change for summer/winter season

Summer time / Winter time : Select summer or winter time according to your time when you program your BIRDY pager, if you use this feature

No time change : If checked, time remains as defined in time zone.

When launching the programming software, time zone definition is updated according to the computer parameters.



6.5 User profiles

Identities | Configuration | Display | Clock | **User profiles** | Predefined messages | Text filters

= Backlight
 = No specific parameter
 = Volume (Ring)

#	Name		LEDs			Ring		Vibrator	
								Yes	Before ring
1	My fave profile								
2	My 2nd best choice					N°8	4		
3									
4									
5									
6									
7									
8									
9									
10									
11									
12									

A profile applies to one or all of identities and sub-addresses.

A profile consists in a choice of audio and visual alerts that apply on receipt of a message.

When user profiles are defined in the **BIRDY** programming, a menu PROFILES is available in the **BIRDY** menu. Go to this menu to activate a user profile if needed.

By default when you start the **BIRDY**, the last profile is active.

When you activate a profile, only identities and sub-addresses linked to this profile are validated. Refer to paragraph 6.1.

1 Profile activation

You can define up to 12 different profiles.

Click on field to activate the corresponding profile .

When active, the profile must then be defined in its line.

2 Profile name

Enter a name for your profile.

Name is 20 characters max.

3 Profile parameters

Click on the column :

No specific parameter selected

User is able to define parameter.

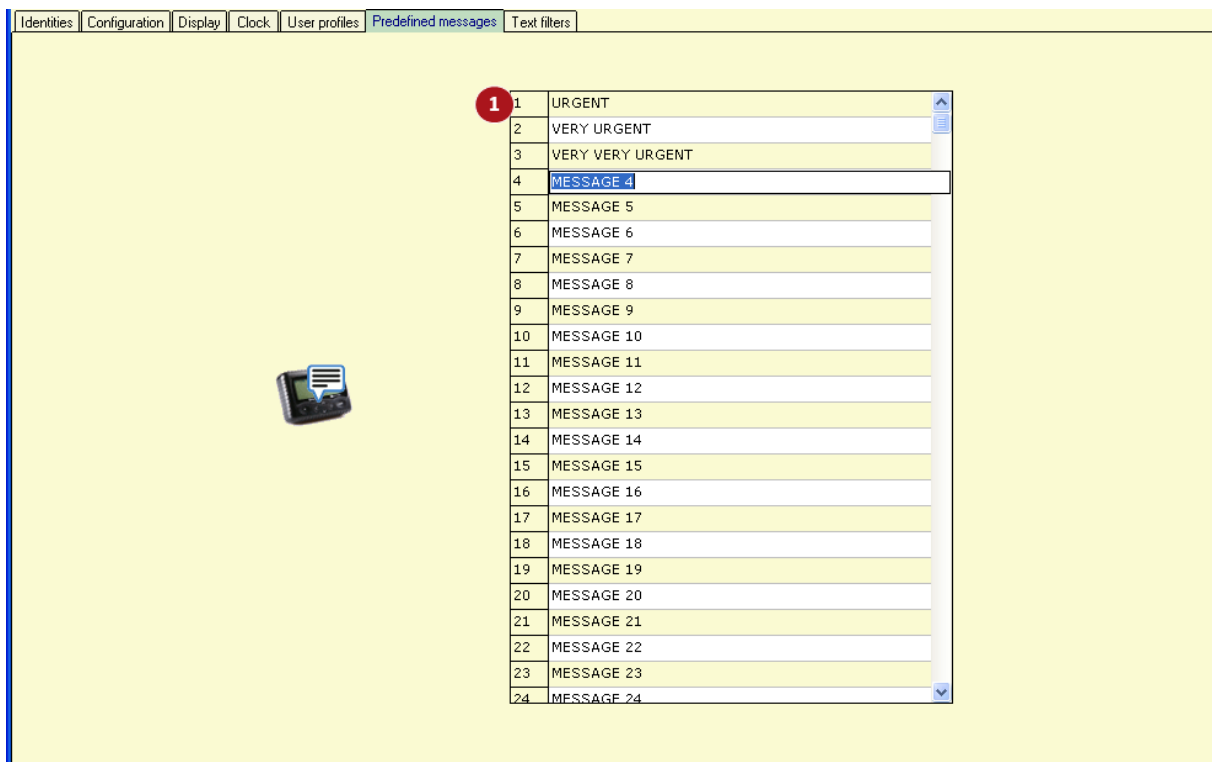
Backlight Click on the field to select colour from drop-down list.



- LEDs** Click on the field to validate LED
You may select : red, green, red and green, none
- Ring** Click on the field to select ring tone from drop-down list.
- Volume** Select volume attached to the profile
- Vibrator** Yes : Click on the field to validate vibrator.
Before ring : Click on the field to validate vibrator before ring tone.

After you defined user profiles go to **16** in *Identities* tab (see paragraph 6.1) and link a user-profile (identified by its number) to a sub-address. When this sub-address receives a message the user-profile will be applied.

6.6 Pre-defined messages



This window enables to define pre-defined messages on the **BIRDY**.

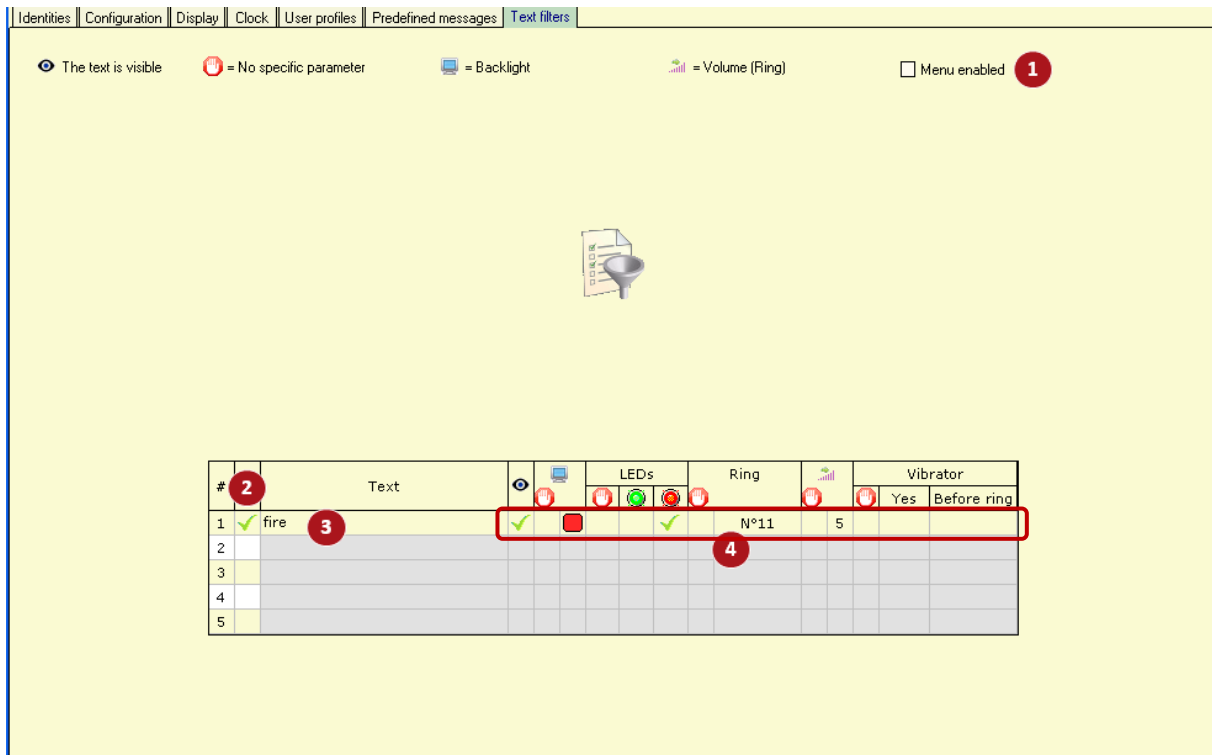
1 Pre-defined messages list

You can define up to 32 messages (BIRDY WP-r2) and 64 messages (BIRDY WP-128), of 40 characters max each, identified by their number.

Link the message to a specific sub-address in **8** in *Identities* tab (see **paragraph 6.1**) and the pre-defined message will be displayed on **BIRDY** screen when sub-address is set off.



6.7 Text-filters



The text filters window enables user to filter some words or group of words in a received message.

1 Menu enabled

If checked, BIRDY will offer a Filters menu to user, for them to validate the filters and apply filters to identities (all sub-addresses are selected).

2 Filter activation

You can define up to 5 different filters.

Click on field to activate the corresponding filter .
When active, the filter must then be defined.

3 Filter

Enter the word or group of words that will be filtered in the received message.
Filter is 20 characters max.

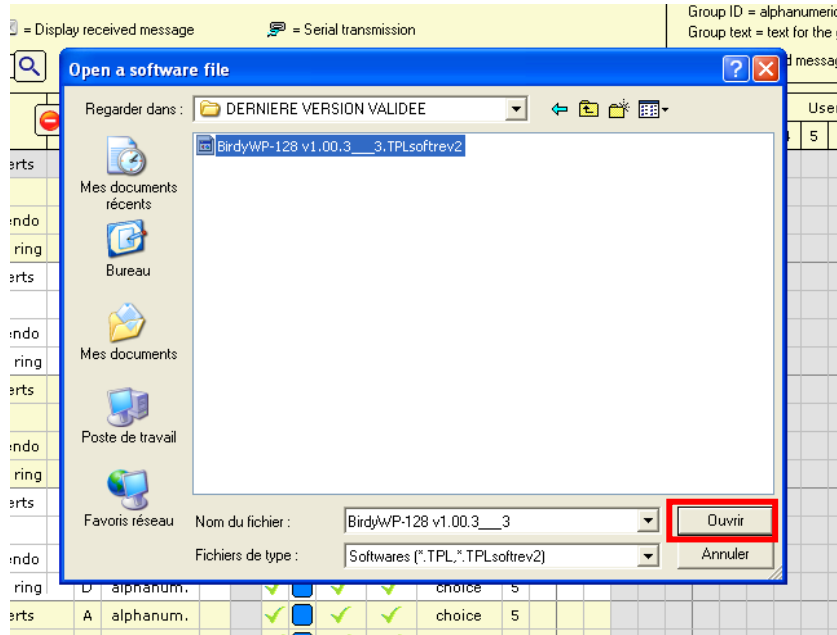
4 Filter parameters

Click on the column :

- No specific parameter selected
- User is able to define parameter.

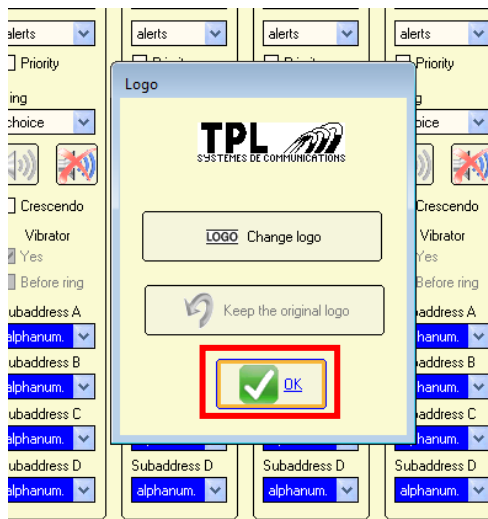
Text is visible Click on the field to make the filtered text visible in the message. Otherwise filtered text will not be displayed in the message.

Backlight Click on the field to select colour from drop-down list.



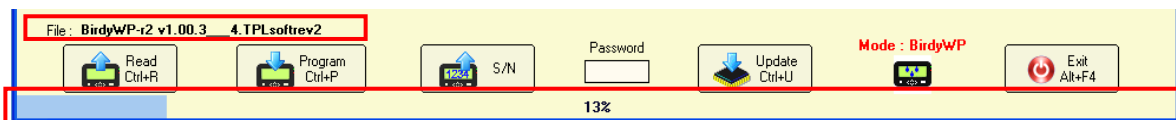
If the option “Changing the logo for update” has been selected (in *Options / Various options*, see **paragraph 4.1**), a window opens in order to upload the picture file which will replace the boot logo.

Note: the picture has to be in **bitmap** format, in **black and white** with the following dimensions: **120 pixels** high, **32 pixels** wide.



If you do not wish to change logo, click directly on “OK”.

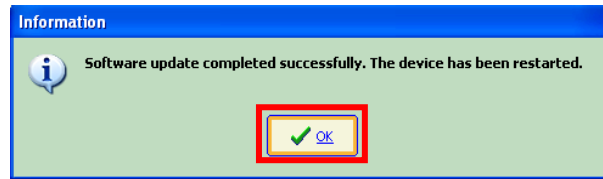
A progress bar shows the updating progress (about 45s). All the selection fields are then shaded and the new version file can be seen on top left of tool bar.



BIRDY display shows “FLASH”.



When the BIRDY software update is complete, click on OK in the **TPLpagers** success window which pops up.

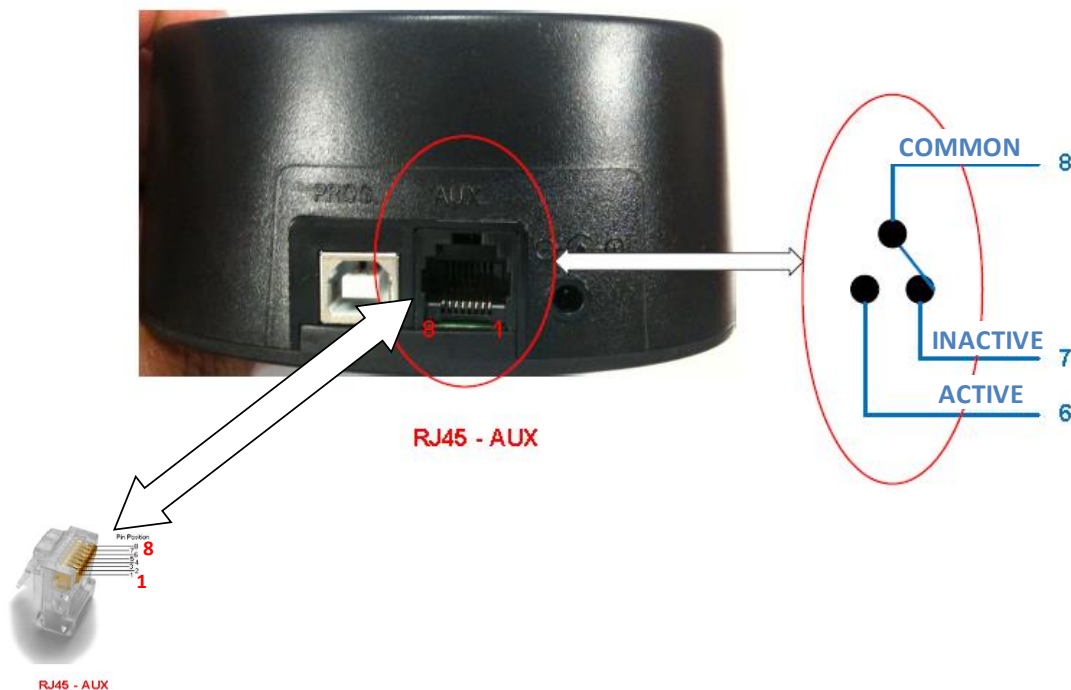


The BIRDY pager is automatically restarted after the update (sound, LED, vibrator).

In order to check if the updating went well:

- Take the BIRDY out of the programming cradle
- The BIRDY starts automatically
- On the first line is displayed the update version which should match with the previously selected file (**BirdyWP-r2 v_X.XX** or **BirdyWP-128 v_x.XX**).

8 Cradle relay output



This RJ45 plug is a dry contact relay that is active when BIRDY is placed upon the cradle, provided feature “Signaling presence of the pager on the support” has been checked (see **paragraph 6.2.1**, points **8** and **12**).

COMMON line is protected by a 1A fuse.

ACTIVE line must be < 120V. Please connect it through a power relay or equivalent.